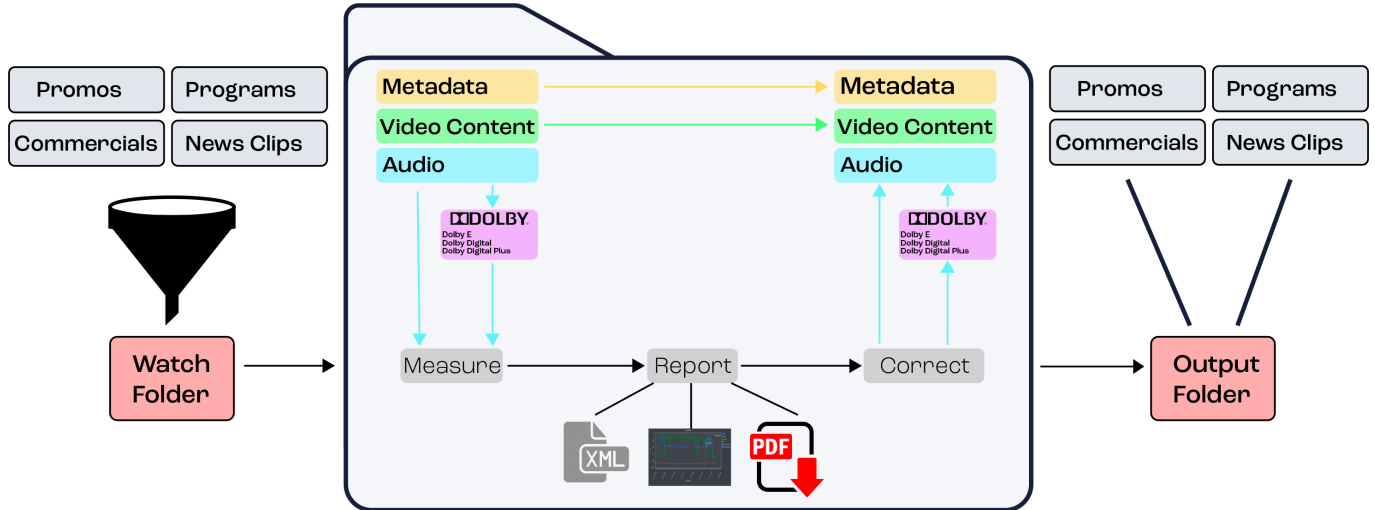




Eff: A simple automated Loudness compliance solution for Media Files



- Works with MXF, QuickTime MOV

- Supports PCM, Dolby Digital, Dolby Digital Plus

- Watch Folder based operation provides an easy automated solution

- Dolby DD/DD+: - Various ACMOD configurations supported etc. 2/0, 3/2
 - Supports varying datarates of compressed DD/DD+ etc
 128, 192, 384

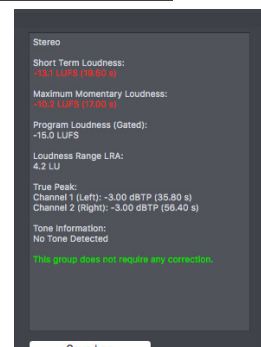
Eff works in three clear stages: Measurement, Correction and Reports

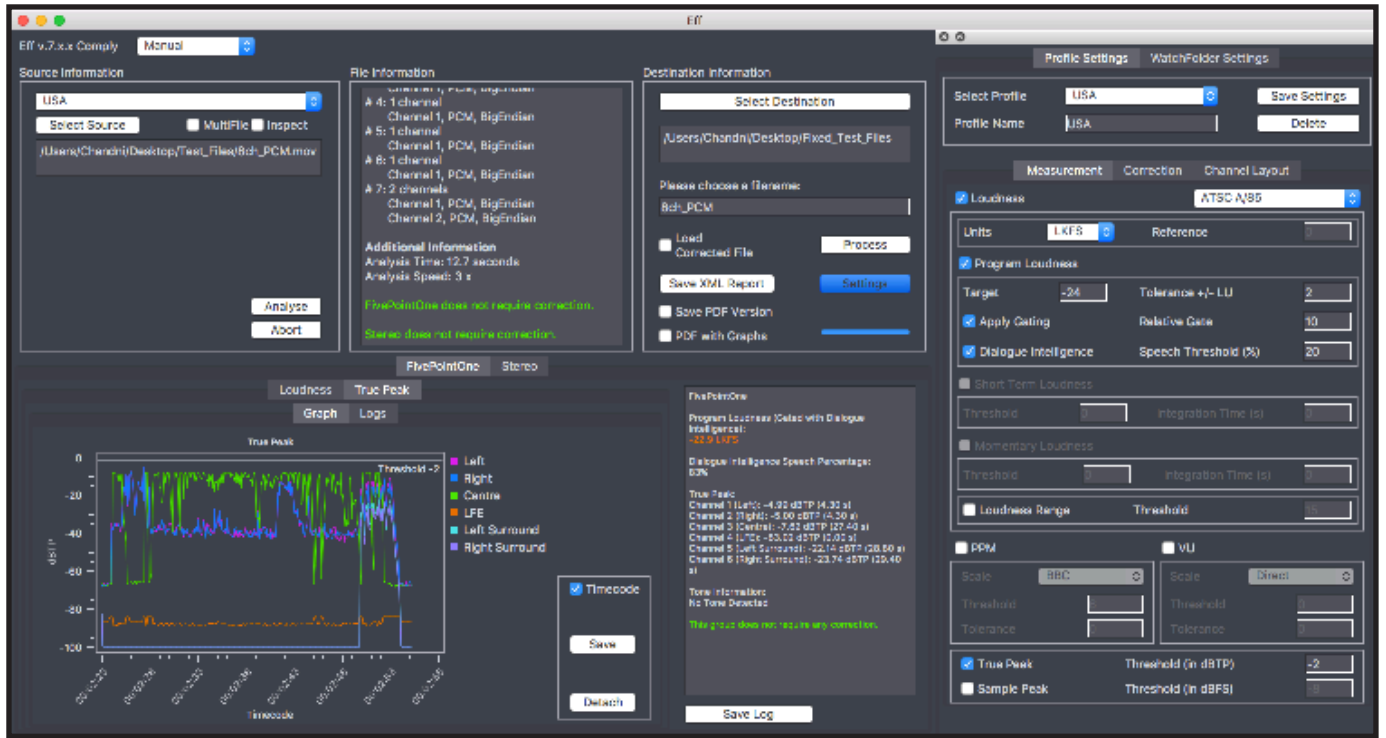
Measurement – Eff provides a comprehensive range of measurements - Program Loudness, Short Term, Momentary Loudness, Loudness Range, True Peak, PPM and VU.

Correction – Program Loudness correction uses global attenuation; True Peak correction uses carefully applied local attenuation. This form of processing ensures that the quality of the creative mix is retained.



Reports – The GUI displays metadata, analysis results and together with graphs and logs clearly indicate where and how the files have failed. Additionally PDF reports with graphs, and XML log files can be generated.





Clear and simple UI enables easy configuration

Function Table

	Measure	Comply	Comply with Watch Folder
Graphical report	✓	✓	✓
Multiple language UI	✓	✓	✓
Windowed measurements	✓	✓	✓
XML/PDF/Logs report	✓	✓	✓
16 Channel	✓	✓	✓
Measure to multiple profiles	✓	✓	✓
6/12/15 frame silence detection	✓	✓	✓
Multifile	✗	✓	✓
True Peak Processor	✗	✓	✓
File fix to standard/profile	✗	✓	✓
LRA Processor	✗	✓**	✓**
▲*Dolby® Digital	✓**	✓**	✓**
▲*Dolby® Digital Plus	✓**	✓**	✓**
▲*Dolby Dialogue Intelligence®	✓**	✓**	✓**
Transport Stream Support	✓	✓	✓
Various ACMOD Support	✓	✓	✓

****Option**
 * Dolby® and Dialogue Intelligence® are registered trademarks of Dolby Laboratories
 ▲ Any Dolby related functionality require purchase of Dolby® option.

Containers/Formats supported:
 BWAV, WAV, AIFF, QT MOV, MPEG I LAYER II, MXF, GXF, LXF

Standards supported:
 BS 1770-1/2/3,4 BS 1771, EBU R128, ATSC A-85, TR-B32, OP-59, Leq(A), Leq(M), AGCOM 219/09/CSP, DPP, Netflix

Loudness Measurements supported:
 Program Loudness, LRA, True Peak, Short Term and Momentary Loudness

PPM Measurements supported:
 BBC, EBU, Nordic, DIN, dBFS (type I), dBFS (type II), VU, Leq(A)

Audio formats supported:
 Mono, stereo, 5.1, and combinations

Audio sample rates supported:
 44.1kHz, 48kHz

Audio bit depths supported:
 16bit, 24bit

Watch Folder Option:
 Single Watch Folder with automatic renaming option, flexible file manipulation, auto generation of XML reporting, and PNG graphs.

Correction:
 Eff will correct Program, Short term and Momentary Loudness as well as True Peak errors without changing the original mix. Eff can also be configured to correct to PPM or VU

Platforms supported:
 Windows 10, Server 2012/2016. Mac OSX 10.8 onwards. Linux